

Our Staff:

Rev. Brad Franklin
Senior Pastor
brad.franklin@bentonumc.org

Jennifer Hable
Worship Leader
hablesheros5@gmail.com

Sandy Deville
Choir Director
sandy.deville@bentonumc.org

Hannah Potter
Pianist
hannah.potter@bentonumc.org

Mary Jo Duddy
Director of Children's & Youth Ministries
maryjom.duddy@gmail.com

Carolyn Collins
Administrator
carolyn.collins@bentonumc.org

Rachel Stoneman
Director of Communications & Missions
rachel.stoneman@bentonumc.org

Linda Silas
Administrative Assistant & Nursery
linda.silas@bentonumc.org

Ashley Stinson
Child Care Coordinator &
Children's Ministry Assistant
patash1210@aol.com

Amber Howard
Nursery

Phyllis Anderson
Daycare Director
phyllis.anderson@bentonumc.org

Anthony Brim
Facilities & Maintenance

Caden Wolff
Custodian

Weekly Events:

Weekly Schedule

Sunday

Worship at 8:15 AM & 10:30 AM
Sunday School at 9:15 AM
Fellowship at 10:15 AM
Children's Church at 10:45 AM
(Children go to Children's Church
after Children's Moment)
Adult Bible Study
@ the Barnes' Home 6:00 PM

Tuesday

Intercessory Prayer Team 10:30 AM

Wednesday

The Closet Work Day 10:30 AM
The Closet Distribution 11:30 AM

*Wide Open Wednesdays
(2nd Wednesdays of the Month)
*Dinner at 5:30 PM
Program at 6:10 PM

AI-Anon 6:00 PM

Thursday

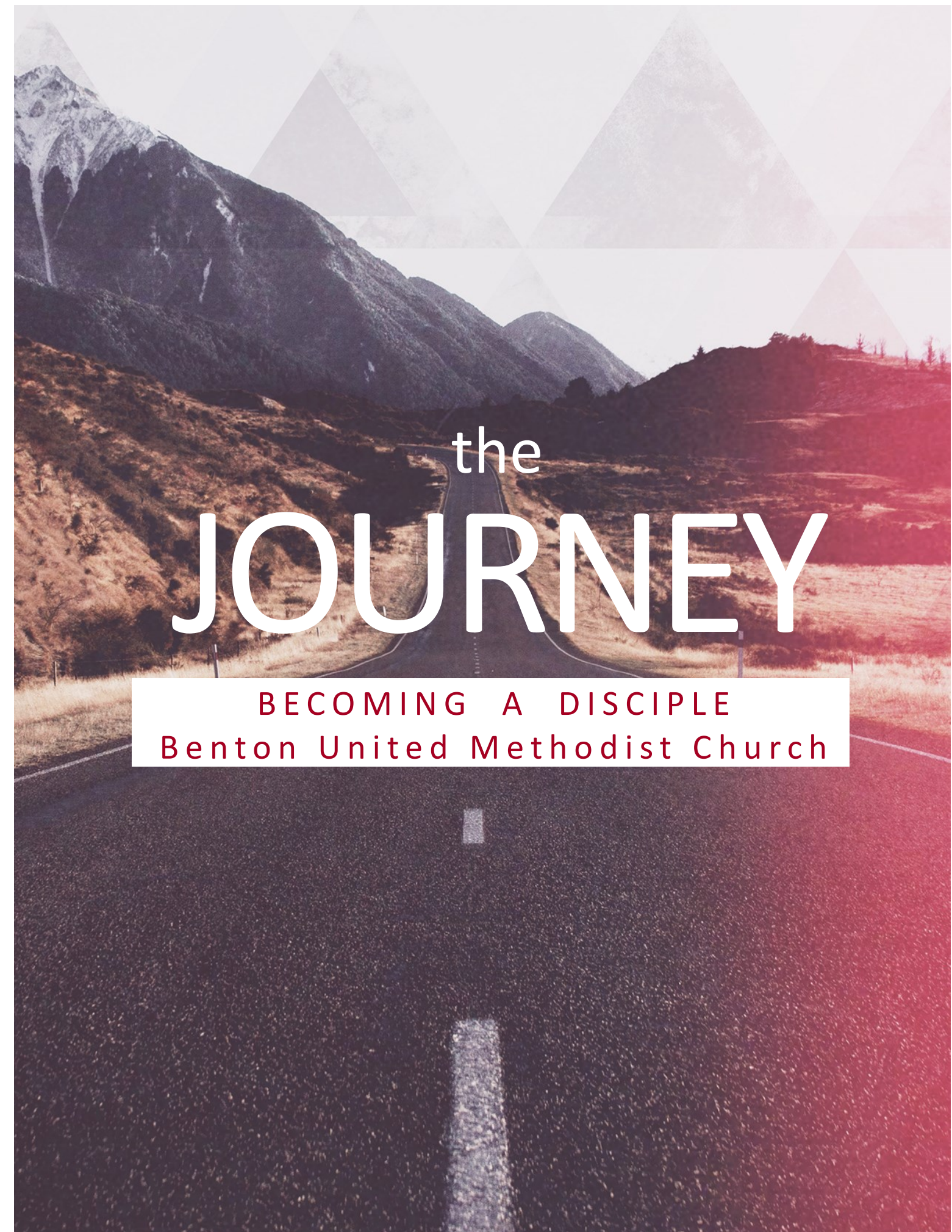
Thursday Bible Study 10:00 AM
Alcoholics Anonymous 6:00 PM
Choir Practice 6:00 PM

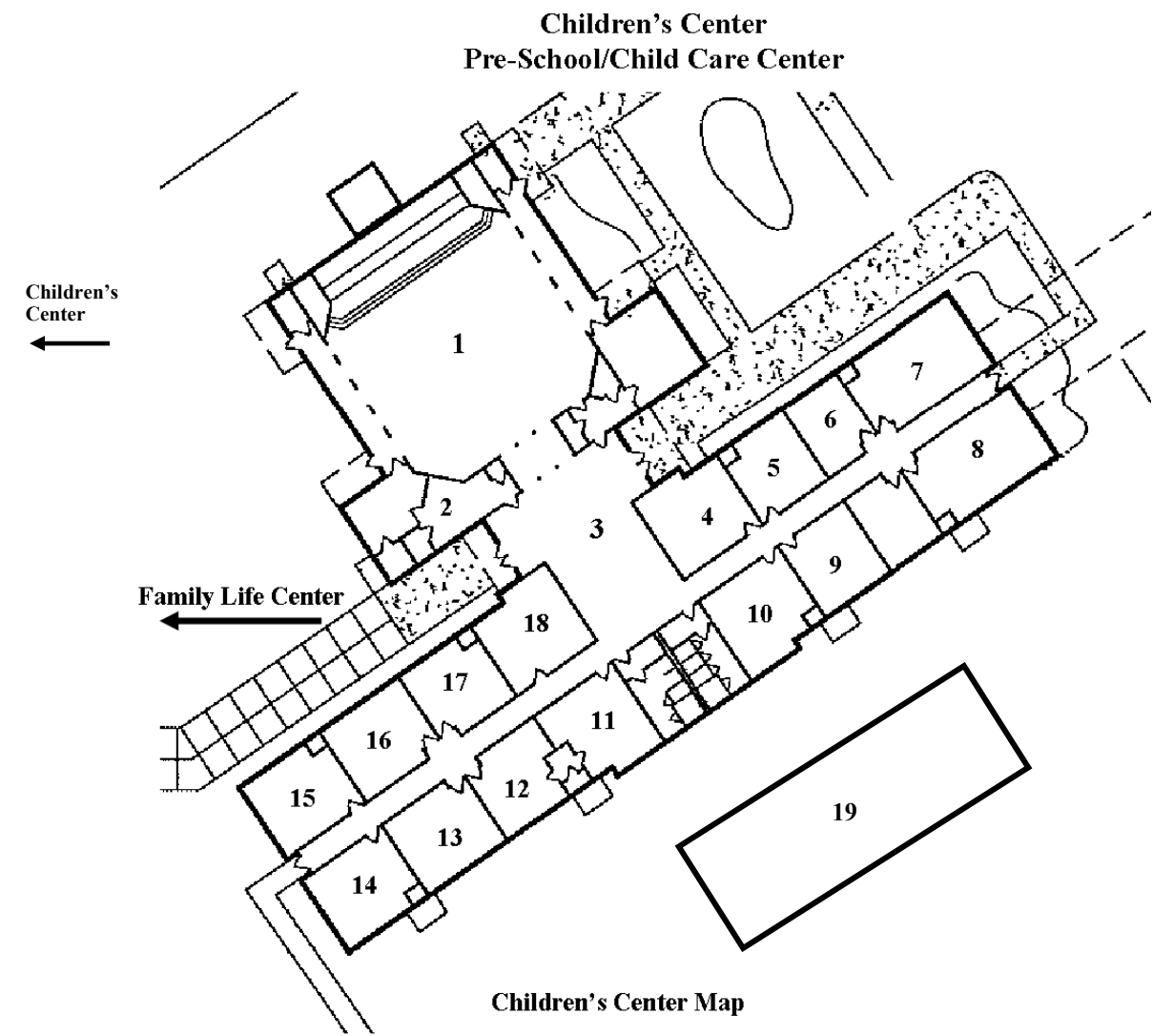
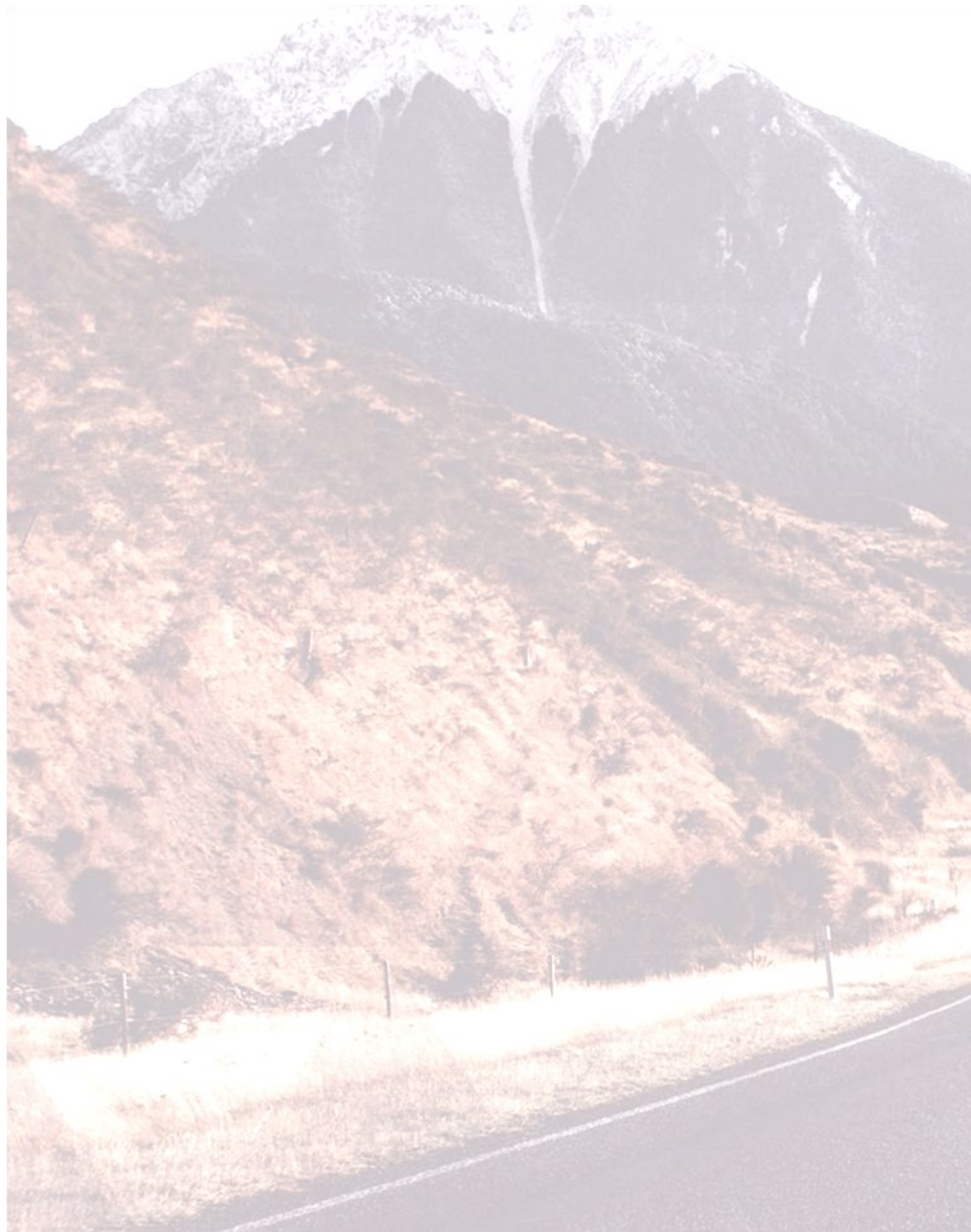
*Fall Schedule

Please visit www.bentonumc.org/Calendar
for more event information.



Benton United Methodist Church
4615 Palmetto Road, Benton, LA 71006
(318) 965-2273
www.bentonumc.org

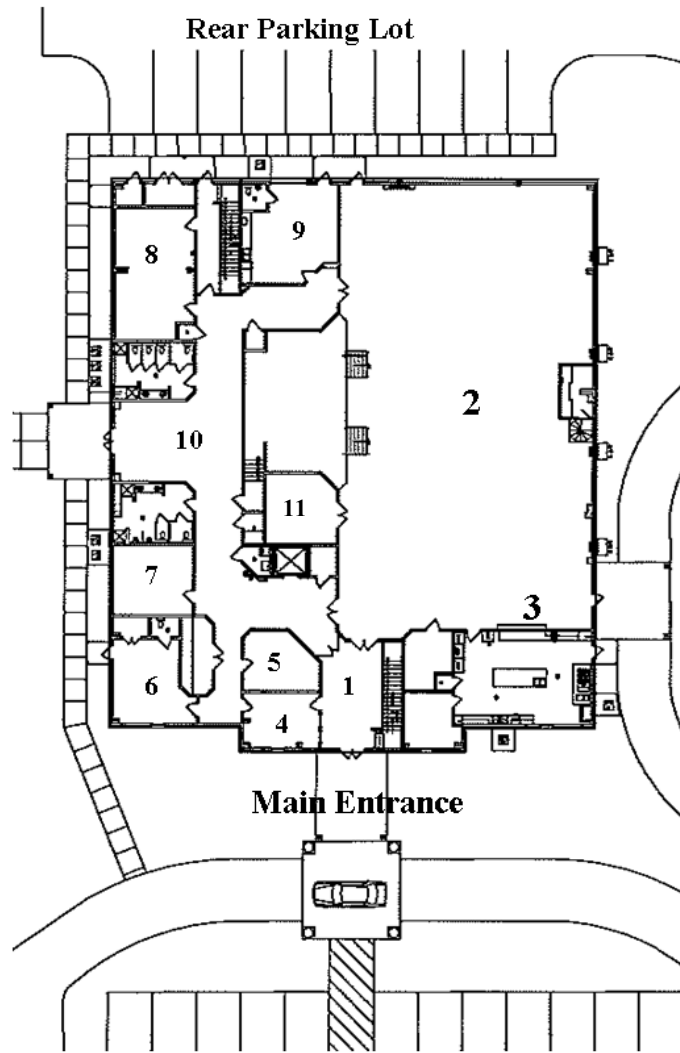




- | | |
|---|--|
| 1. Believer's Sunday School | 11. Daycare Room |
| 2. Pre-School/Childcare Office | 12. Preschool Sunday School |
| 3. Foyer | 13. 2nd & 3rd Grade Sunday School |
| 4. Christ's Melting Pot Adult Sunday School | 14. Daycare Room |
| 5. Kindergarten & First Grade Sunday School | 15. Daycare Room |
| 6. Fellowship Class Adult Sunday School | 16. Daycare Room |
| 7. Eva Smith Adult Sunday School | 17. Daycare Room |
| 8. Daycare Room | 18. Daycare Room |
| 9. 4th & 5th Grade Sunday School | 19. The Potter's Hand (<i>Mobile Home</i>) |
| 10. Grumpy Old Men Adult Sunday School | |

Our Facilities...

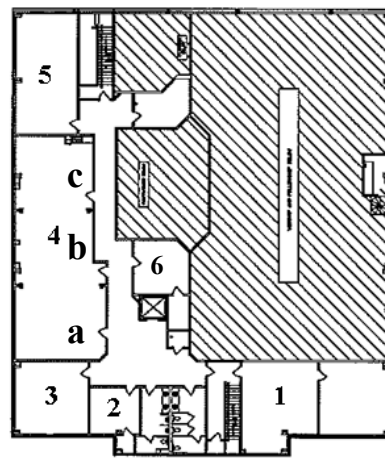
Family Life/Worship Center 1st Floor



1st Floor Map

1. Foyer
2. Worship Center
3. Kitchen
4. Church Office
5. Business & Finance Office
6. Pastor's Office
7. Communications & Missions Office
8. Music Ministries Room
9. Playroom
10. North Foyer
11. Storage

Family Life/Worship Center 2nd Floor



2nd Floor Map

1. Pairs and Spares Classroom
2. Ed DeBusk Prayer Chapel
3. Breakfast Club
4. Bible Beach Children's Ministries
 - a. Children's Church
 - b. Children's Ministry Office
 - c. Nursery
5. Middle School Sunday School
The Closet Clothes Ministry (Wednesdays)
6. Office

Welcome

We are glad you joined us!

We hope this welcome guide will answer some of the questions you may have about Benton United Methodist Church. Inside you will find information about our mission and beliefs, the weekly schedule, ministries for all ages, and contact information.

Our Mission

The mission of Benton United Methodist Church is to make disciples of Jesus Christ by *inviting in*, *growing up* and *sending out* transformed persons in mission and ministry.

We seek to accomplish our mission through dynamic worship, life-changing small group interaction, and engaging mission and service opportunities. Every element of our mission is designed to invite others into a relationship with Jesus Christ to experience His salvation through spiritual growth and service for the Kingdom to others.



Contact Information:

Church Office Phone: (318) 965-2273

Email: bentonumc@bentonumc.org

Website: www.bentonumc.org

Facebook: www.facebook.com/servingbenton

Revised 2.15.2022

Small Group Opportunities

United Methodist Men

The mission of the General Commission of the United Methodist Men is to assist men to know Jesus Christ, to serve Him, to grow spiritually and to seek daily to do His will. The Benton United Methodist Men (BUMM) support our church and the surrounding community through various projects and fundraisers.

Every first and third Sunday of each month at 7:00 AM, the BUMM meet for breakfast and fellowship and to plan church workdays and fundraisers. They also meet for breakfast every Wednesday at 6:00 AM for study and devotion. Join them!

Henry Simons bentonumm@gmail.com

United Methodist Women (Currently inactive due to COVID)

The organized unit of United Methodist Women is a community of women whose purpose is to know God and to experience freedom as whole persons through Jesus Christ, to develop a creative, supportive fellowship, and to expand concepts of mission through participation in the global ministries of the church. Membership is open to all women in the congregation.

Circles meet September—May. The Morning Glories meet the second Thursday of each month at 9:30 AM in the Breakfast Club classroom and the Nightingales meet the third Tuesday at 6:30 PM in the Eva Smith room.

Linda Silas (318) 965-2273 linda.silas@bentonumc.org

Dinner With Friends

This Empty Nester group is always looking for new people to join. At each quarterly meeting, small groups are assigned. These small groups meet about once a month for a meal or other activity, either in a home or a restaurant, to hang out and get to know each other. If you would like to be part of Dinner with Friends, come to the quarterly meeting or contact Reba Hearne or Carolyn Collins for more information.

Reba Hearne (337) 739-5048 or Carolyn Collins (318) 965-2273

Just A Bunch of Lit Wits

The Lit Wits are a fun group of people who like to read. They meet on the 3rd Friday of each month at Coffee on the Red on Benton Road at 6:45 AM. They read fiction, non-fiction, Christian, secular, historical, science-fiction, and more!

Rachel Stoneman (318) 935-8515 rachel.stoneman@bentonumc.org

Sunday Bible Study at the Home of the Barnes'

This is an adult group that gathers to study God's word. They meet at Dickie and Sharon Barnes' home on Sunday nights at 6:00 PM. Everyone is welcome.

Reba Hearne (337) 739-5048

Thursday Bible Study with Nancy Stinson

This group Study is focused on reading the Bible and discussing what you have read. The only materials needed is your Bible, but notebooks and pens are helpful, too.

Nancy Stinson nancy.stinson48@gmail.com

WOW! (Wide Open Wednesdays)

Wide Open Wednesdays is a mid-week ministry opportunity for all ages. Intergenerational worship, study, games, and mission opportunities are available once a month and it all starts with a full family dinner at 5:30 PM. A nursery for infant-3 years old is provided. Everyone is welcome. (WOW! meets during the school year and on other special occasions as advertised.)

Linda Silas (318) 965-2273 linda.silas@bentonumc.org

Bodies On a Mission

Bodies On a Mission is an exercise program that meets by zoom. There is a wide variety of exercises, accommodating all ages, and everyone works at their own pace.

Kim Hauser kimdenise1996@gmail.com

Support Ministries

Alcoholics Anonymous

AA meets upstairs in the Breakfast Club classroom on Thursdays at 6:00 PM.

Chris (318) 286-1107

Al-Anon

Al-Anon meets upstairs in the Breakfast Club classroom on Wednesdays at 6:00 PM.

Jessica D. (318) 564-2205

The Table Food Ministries

Benton UMC Emergency Food Pantry

This ministry provides food for families during emergency situations who do not have the paperwork available for the monthly program, are homeless, or are in another situation. The flexibility of the Emergency Pantry allows us to help people in unexpected situations. The supplies for this pantry come from food and monetary donations from the church.

For information on the emergency pantry, contact: Ginny Jones covey21@att.net

NWLA Backpack Program @ Plain Dealing High School

As an agency of the NWLA Food Bank, we provide for food-insecure children with "weekend" food. The gallon size packs are distributed on Fridays by Melanie Welch at Plain Dealing High School.

NWLA Food Pantry

Benton UMC is an agency of the Northwest Louisiana Food Bank that serves the 71006 zip code area. The supplies for these boxes come directly from the NWLA Food Bank at very little expense to the church. Applicants must meet requirements to be approved for this program. Distribution is on the third Wednesday of each month from 12:30—4:00 PM. Unloading and packing are done the Tuesday before at 9:00 AM.

For information on the pantry or backpack program, contact: Rachel Stoneman (318) 935-8515 or rachel.stoneman@bentonumc.org

Mackenzie's Manna Bags

The congregation packs gallon plastic zippered bags with a protein bar, canned fruit, water bottle, rehydration drink, canned meat, devotional, and a list of assistance resources for homeless people in need.

For information on manna bags, contact: Rachel Stoneman (318) 935-8515 or rachel.stoneman@bentonumc.org

Souper Saturday

Meets the last Saturday of each month to prepare soup and bag lunches for those in the Benton community who receive *Meals-on-Wheels* and other homebound people. The ministry ensures that these recipients receive at least one warm meal on the weekend. Servants gather to cook, bag, clean or deliver the soup and lunches.

For information on Souper Saturday, contact: Joan Greathouse joan.greathouse@gmail.com

Seeds For the Harvest Community Garden

Learn how to grow, harvest and cook fresh vegetables grown by your own hands. This ministry is an educational outreach. There are many different opportunities to serve in the garden—watering, digging, helping in cooking and storing classes, and many others. No skills needed.

For information on the garden, contact: Rachel Stoneman (318) 935-8515 rachel.stoneman@bentonumc.org

Quarterly & Yearly Events

Angel Tree UMC&FS and Kingston Elementary Shoes

Benton UMC collects gifts requested by the United Methodist Children and Family Services and shoes for Kingston Elementary school during Christmas.

Kim Hauser kimdenise1996@gmail.com

Beat the Heat Fan Drive

Benton UMC collects fans for the elderly and low income families in our immediate area. We serve Benton and Plain Dealing Council on Aging and those served by Benton UMC.

Gail Pitts (318) 935-8515

*Fire Department Angel Tree

Benton UMC hosts an angel tree for Benton Fire District 4. We collaborate to bring toys to all the boys and girls in need in our area. They get a special delivery from the Benton Fire Department.

Kim Hauser kimdenise1996@gmail.com or
Rachel Stoneman rachel.stoneman@bentonumc.org

*Hands & Feet: Serving with Our Children

A serving ministry for families with children and other congregants to mentor these children. Serve with our children Benton UMC and lead them in becoming a disciple of Christ!

Ashley Stinson (318) 349-5913 or patash1210@aol.com
Joley Scott joley.scott@bossierschools.org

LifeShare Blood Drives

Benton UMC hosts LifeShare Blood drives quarterly. Benton UMC has to meet the required minimum donation of 150 units per year to qualify for this program.

Rachel Stoneman (318) 935-8515 or rachel.stoneman@bentonumc.org

Operation North Star

Historically, Operation North Star served those military service members that were serving our country in Djibouti, Africa by sending care packages for Christmas. This ministry is currently focusing on our local military members.

Jon Novak jonnovak@live.com

Prison Holiday Outreach

Our ministry with the Bossier Correctional Facility began in 2020 with "Pies for Prisoners" at Thanksgiving and "Snack Cakes for Prisoners" at Christmas.

Ashley Stinson patash1210@aol.com

Souper Saturday Christmas Boxes

A new addition to the Souper Saturday Ministry is "Souper Saturday Christmas Boxes." This ministry invites the church to give the Souper Saturday team a break and allow a more flexible delivery so others with more strict schedules can participate. The box is filled with some holiday offerings and can be delivered anytime after Thanksgiving.

Rachel Stoneman (318) 935-8515 or rachel.stoneman@bentonumc.org

Group Outreach

United Methodist Men
Louisiana Methodist Children's Home
Gingerbread House
Teen Challenge
Operation Blessing

United Methodist Women
Samaritan's Purse
The Table Food Ministry
Purchased, Not For Sale
Providence House
Common Ground

Bodies On A Mission
The Closet Clothes Ministry

Dinner with Friends
Woody's Home for Veterans

Breakfast Club Class
Manna Bags

Children's Ministry
Heifer Project, Int.
Souper Saturday
St. Jude's Children's Hospital

Eva Smith Class
Heifer Project, Int.
Louisiana Methodist Children's Home
Special Offerings

Grumpy Old Men Class
Louisiana Methodist Children's Home

Pairs & Spares Class
Fire Recovery Ministry
The Closet Clothes Ministry
Souper Saturday
Helping Hands
The Table Food Ministry

The Potter's Hand Class
Benton UMC Emergency Food Pantry

Youth Ministry
Providence House
Super Souper Saturday
The Table Food Ministry

Mercy's Tree Serving Ministries

Benton UMC Mission

The mission of Benton United Methodist Church is to make disciples of Jesus Christ by *inviting in, growing up and sending out* transformed persons in mission and ministry. We seek to accomplish our mission through dynamic worship, life-changing small group interaction, and engaging mission and service opportunities. Every element of our mission is designed to invite others into a relationship with Jesus Christ to experience His salvation through spiritual growth and service for the Kingdom with others.

Outreach Mission

The congregation serves in various mission projects in the immediate area and throughout the world. We invite people to established mercy ministries to build relationships, learn about community needs, and grow hearts and minds to develop a closer community. We advocate for the hungry, the homeless, and the hurting. We invite you to show God's love is real, face-to-face or behind the scenes.

If you are interested in serving or have an idea for a service opportunity, please contact:

Sue Shadow, Mission Chair
(318) 965-2496
shadow781@bellsouth.net

Rachel Stoneman, Director of Missions
(318) 935-8515
rachel.stoneman@bentonumc.org

A Cross Faith Advocacy Group

A Cross Faith Mission Statement: Churches of North Bossier Parish uniting the Body of Christ across faith lines to serve those in need. A Cross Faith is an ecumenical ministry founded by St. Jude Catholic Church, Elizabeth Baptist Church, and Benton United Methodist Church which advocates for transportation, food, shelter, clothing, and physical and mental health.

For more information on A Cross Faith, contact: Rachel Stoneman (318) 935-8515 or rachel.stoneman@bentonumc.org

The Closet Clothes Ministry

The Closet Clothes Ministry serves those in need of clothing and household items and there are no requirements to meet to shop—everyone is welcome. Donations of clothing, shoes, and linens are accepted at Benton UMC.

Hours: Wednesdays 11:30 AM-1:30 PM; 3rd Wednesdays 11:30 AM-4:00 PM

For information on The Closet Clothes Ministry, contact: Sue Shadow (318) 965-2496 or shadow781@bellsouth.net

Care Bears

Care Bears serves local children traumatized by abuse, disaster, or other tragic circumstance. First responders of the Benton Police Department and Bossier Parish Sheriff's Department keep these stuffed animals with them to give to children who have suffered or witnessed traumatic events. Studies show that stuffed animals can be a comfort because children benefit from the embrace they give these softly textured toys. It offers them a friend in a chaotic time and these stuffed animals will be prayed over with focus on the recipient. God knows who that will be. To help this ministry, please bring new and very gently used stuffed animals to the church office.

For information on the Care Bears Ministry, contact: Linda Silas (318) 965-2273 or linda.silas@bentonumc.org

Disaster Relief Ministry

The Disaster Relief Ministry serves those in the midst of disaster including floods, fires, tornadoes, and other disasters which cause displacement of families in low or mass quantities. Response is activated by UMCOR's Early Response Team and District Disaster Preparedness Coordinators.

For information on Disaster Relief, contact: Rachel Stoneman (318) 935-8515 or rachel.stoneman@bentonumc.org

Fire Recovery Ministry

This ministry meets people at one of the most devastating times of their lives and helps the recovery process begin, all while the fire is **still** burning. House fires can be emotionally, physically, and financially devastating, so the Fire Recovery Ministry is on call 24 hours a day, 7 days a week, and 365 days a year.

How it works: The fire chief or fire fighter calls Rachel, she deploys a team, and they respond immediately with the fire box and their servant partner. (This can be a husband and wife team or 2 other people that are male and female.) Then, the team will arrive at the house (ID cards are issued by the fire chief), meet the family, and do what is called for at that time. Often, they need hugs, someone to hold their hands, answer questions about what is next, and most importantly, to pray with them. If you are interested in this ministry, training is available.

For information on the Fire Recovery Ministry, contact: Rachel Stoneman (318) 935-8515 or rachel.stoneman@bentonumc.org

Joseph Ministry

The **Joseph Ministry** serves mostly where needed in the church and community. They make deliveries of clothing and furniture to places like Common Ground, the Renesting Project, Shreveport-Bossier Rescue Mission, Providence House, The Learning Center, St. Vincent de Paul's and many other ministries. They also set-up for Journey to Bethlehem each year with help from the Benton United Methodist Men.

For information on the Joseph Ministry, please contact: Ron Jones (318) 469-3693 or ronald.r.jones@att.net

Sew Crazy Ladies

Sew Crazy Ladies works on many projects like book bags for UMCOR Sager Brown Depot, the costumes for Journey to Bethlehem, and other items for ministries and people in need.

For information on the Sew Crazy Ladies, contact: Katherine Ashley at lucykatherine52@yahoo.com

Other Group Ministries

Beach B.U.M.S.

Beach B.U.M.S. is our Children's Ministry (ages 3 - 5th grade) at Benton United Methodist Church. Ministry activities include weekly faith development groups for children on Sunday mornings at 9:15 AM, Children's Church during the 10:15 AM worship service, and fun-filled activities at least once a month. Monthly activities are scheduled to give children the opportunity to develop their hearts and minds with a focus on outreach to others. Other monthly activities offer fellowship for children and their parents. In addition to fun and service, monthly activities also offer a Christian education focus, enabling children to learn more about and develop their faith. Our main summer focus is VBS - a fantastic week filled with faith, food, and fellowship.

Mary Jo Duddy (318) 773-6205 maryjom.duddy@gmail.com

Student Ministries

Benton Student Ministry is the connection point for persons in grades 6-12. We offer small group Bible study on Sunday mornings at 9:15 AM. We also have breakfast Bible study groups that meet before school two days a week. Our weekend ministry opportunities focus on service in our community and extended area. These monthly opportunities include playing BINGO with seniors at a local assisted living community, family parties at Providence House, feeding our Downtown Friends, and 5K runs for research and charity organizations. Middle School Mischievous Mondays allow our middle school students the opportunity to hang out, play, and compete with one another. We offer confirmation for students in grades 7 and above to learn more about their faith journey as a preparation for baptism or the affirmation of their infant baptism. Bible studies (currently Disciple Bible Study for high school girls and moms - Sunday evenings) and studies focused on our Christian journey/experience (upcoming enneagram study for high school students during Lent - Wednesday evenings) are offered at a variety of times throughout the year. Our main summer focus is extended mission and outreach in areas throughout the U.S. Our students are an unmatched force of volunteers for our summer VBS program as well.

Mary Jo Duddy (318) 773-6205

Worship Ministries

Choir

The choir is one of the music ministries we offer. The choir practices on Thursday nights at 6:00 PM and sings during the 8:15 AM worship. The choir performs a Christmas Cantata during Advent and occasionally an Easter Cantata as well.

Sandy Deville sandy.deville@bentonumc.org

Praise Team

Worship is led by the Praise Team at the 10:30 AM service. A brief practice period will be held prior to joining the team for morning worship. Practices are scheduled week by week. The team participates during Christmas Eve service, Easter service and any other special services deemed necessary. All instruments are welcome.

Jennifer Hable (318) 294-5644 hablesheros5@gmail.com

Sound & Recording

Each Sunday our sound technician controls the microphones and sound levels from the Crow's Nest while running the camera for service recordings. Volunteers are needed to step in when Dan is unable to attend or come to practices to help the music ministries practice.

Dan Garner louisianadan@gmail.com

Video & Recording

Each Sunday our video technician controls the screens while running the camera for service recordings. Volunteers are needed to step in when Rachel is unable to attend.

Rachel Stoneman (318) 935-8515 rachel.stoneman@bentonumc.org

CONGREGATIONAL CARE

Patsy Burnes patsyburnes1945@gmail.com

Intercessory Prayer Ministry

The Prayer Team meets every Tuesday at 10:30 AM in the Ed DeBusk Prayer Chapel on the second floor of the Family Life Center. They pray for the needs of the world, community, and congregation, and often provide cards of encouragement to those for whom they pray. The Prayer Chain is activated by calling Nancy Stinson at (318) 455-4350 when there is an immediate or critical need.

Rev. Brad Franklin (318) 965-2273 brad.franklin@bentonumc.org

Eucharistic Ministry

This is a ministry of trained volunteers who serve the elements of Holy Communion to home-bound, nursing home, and hospitalized persons who are unable to attend regular worship services. Volunteers serve once a month in this vital ministry.

Robert Hauser (318) 422-8929 hausrobd7835@gmail.com

The Prayer Shawl Ministry

This ministry provides shawls to those needing comfort in times of trials (illness, tragedy, etc.). This is a great place to share what you know about crochet and knitting and learn from those who share! Children and youth welcome.

Brenda Paul brndvpaul@gmail.com

Shepherd Ministry

The Shepherd Ministry at Benton UMC is designed to be a liaison between the congregation and the pastoral staff to better serve the needs of the people and to keep the church office updated on events and information.

Rev. Brad Franklin (318) 965-2273 brad.franklin@bentonumc.org

CLASSES FOR CHILDREN & YOUTH

Mary Jo Duddy (318) 773-6205 maryjom.duddy@gmail.com

Wesley, by David C. Cook, is the curriculum used in our children's Sunday school classes, from Preschool through 5th grade. Every class explores the same Bible story each week in age appropriate, engaging ways that connect to everyday life experiences. Our nursery age children use Rock-a-Bye Toddlers and Twos from Abingdon Press that teaches this age group simple faith concepts using age appropriate activities, stories and music. We have a class for every age:

Nursery (Toddlers and Twos)
Preschool (Ages 3 and 4)
Kindergarten and 1st Grade

2nd and 3rd Grades
4th and 5th Grades
Middle School

Benton UMC Daycare and Preschool

The center is open to all children ages 6 weeks to 12 years of age. We offer a Christian-based program of loving care and guidance and we believe that all children need to develop a positive self-image.

Hours of Operation:
6:30 AM - 6:00 PM Monday – Friday

Phyllis Anderson (318) 935-8504
phyllis.anderson@bentonumc.org

CLASSES FOR ADULTS

Sundays at 9:15 AM

Eva Smith

This class is for women of any age who want to be involved in Bible study and mission. A strong bond of fellowship and nurturing is felt in this class. Our ongoing mission projects include The McDade House, The Methodist Children's Home in Ruston, and the Heifer Project, and special offerings of the United Methodist Church. We share our concerns, we pray, and we study.

Betty Russell (318) 560-3223 myron_russell@bellsouth.net

Grumpy Old Men

We seek to study and understand both Old and New Testaments with a strong emphasis on the writings of our founder John Wesley & also the Messianic Jewish perspective. Together we bring understanding to today's problems in the world. All mature men are welcome; come even if you're not grumpy. Bring your comments and questions so we can all learn together. Class participation is encouraged. We support the Methodist Children's Home.

Francis Edwards

The Potter's Hand

This class seeks to reach out to young couples and singles with small children in order to grow and fellowship with others who are experiencing similar circumstances or those who have already been in their situation. A variety of materials are used to study GOD's word. Our serving ministry is the Church's Food Pantry.

Andy & Lillian Holley (318) 218-3371

Pairs and Spares

This class is a group of 50-somethings and beyond. The class focuses on Bible study, but always with an eye toward making the Scripture relevant to our daily lives. We are an eclectic bunch defined exactly by our name. Couples and singles are welcome. Our serving ministry is Fire Recovery and we support all serving ministries of Benton United Methodist Church.

Reba Hearne Rhearne2@att.net

The Breakfast Club

This is a unique and fun loving group of Christians who come together on Sunday to worship Christ through a contemporary study of the Bible and how it relates to our everyday life and struggles. We rely on each other through a network of prayer and friendship. We take turns bringing breakfast and have many social activities throughout the year. Our serving ministry is manna bags for the homeless.

Sally Carroway (318) 465-3168 scarroway@bellsouth.net

Christ's Melting Pot

Find your way in this welcoming community of variety. Christ's Melting Pot is a Sunday school class with members from many different backgrounds who have found a home in this Sunday school class. Our backgrounds range from north to south, Baptist to Catholic, married to single, kids to no kids, and everything in-between. Join us as we study and discuss God's word to find our way in this crazy world.

Stacy Smith (318) 393-2687

Fellowship

A variety of material is used in this class in order to reach all interests. Participants engage in discussions that have to do with present situations that affect our lives. Couples and singles are welcome in this class.

Debbie Filler (318) 464-3663 ddfiller@bellsouth.net
Margie Covington (318) 965-2953 m0853@bellsouth.net

College & Careers Discussion Group

This class is for post high school/college age. We discuss a mixture of current events, theology and how the Bible applies to our lives.

Austin Stoneman (318) 207-8272

The Believers

The Believers class is open to everyone, but its main purpose is to gather older adult couples in a setting of open discussion about life struggles in light of the Good News of God's Word. A secondary aim is to create a fellowship of believers for support and recreation. It meets in the multi-purpose room in the Children's Center and is led by Katherine Kavanaugh.

Katherine Kavanaugh (318) 218-7730